



FIRE DETECTION

Addressable devices

— DETECTORS AND BASES

TOADR



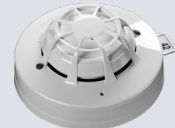
Optical smoke detector
(to be combined with the base EMADR).

TTADR



Heat detector
(to be combined with the base EMADR).
Available in 50°C, 65°C, 80°C.

TMCADR



Multisensor detector
(to be combined with the base EMADR)

TFUVADR



Flame detector delivered with base and mounting bracket.

EMADR



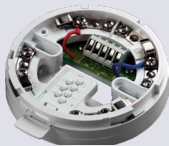
Base for addressable detector.

KITSEAP



Watertight kit for TOADR, TTADR, TMCADR.

EMBISADRW



Isolating base.

EMBISADRSW



Sounder & beacon addressable base with isolator.

TTEXADR



Intrinsically safe heat detector.

EMEXADR

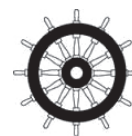


Base for intrinsically safe detector.

TOEXADR



Intrinsically safe optical smoke detector.



APPROVALS

► MED





MANUAL CALL POINTS

DMADRIS



Manual call point with isolator IP24D.

DMADREIWI



Waterproof manual call point with isolator IP67.

DMEXADRE



Intrinsically safe manual call point IP67.

SIRENS AND BEACONS

SDIR24_1CDE



Multi-tone red siren, 24VDC, 100dB, IP65, MED.

FSDIR24_10CDE



Multi-tone red sounder/beacon 24 VDC , 1J, 100dB, IP65, MED.

OTHER

DMZI DIN



Conventional zone monitor for addressable loop.

IGEXADR



Galvanic isolator for intrinsically safe detector (to be combined with TOEXADR, TTEXADR, DMEXADRE1).

DPTXADR



Single channel IS protocol translator .

ISDW



Double short-circuit isolator.

DMS1EW - DMS1SW



Input/output module.

PHOENIX TEMPO



Timer module on addressable loop.



Tel. + 33 (0)2 98 52 16 44 - Fax : + 33 (0)2 98 64 74 05 - marinelec@marinelec.com - www.marinelec.com

sail safely

