



FIRE DETECTION

Conventional devices

DETECTORS AND BASES

TOA



Optical smoke detector
(to be combined with the base EMBCAO).

TTA



Heat detector
(to be combined with the base EMBCAO).
Available in 50°C, 65°C, 80°C.

TMCA



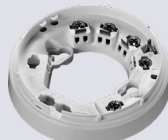
Multisensor detector
(to be combined with the base EMBCAO)

TFUVAW



Flame detector delivered with base and mounting bracket.

EMBCAO



Base for conventional detector.

KITSEAP



Watertight kit for TOA, TTA, TMCA.

TOD



Optical smoke detector
(to be combined with the base EMBCD).

TTD



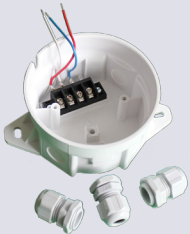
Heat detector
(to be combined with the base EMBCD).

EMBCD



Base for detector TOD and TTD.

KITSED



Watertight kit
for TOD and TTD.

TOEXA



Intrinsically safe optical smoke detector.

TTEXA



Intrinsically safe heat detector: TTEX50AW, TTEX65AW, TTEX80AW.

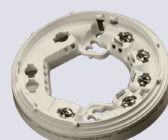
Intrinsically safe static heat detector: TTEXS50AW, TTEXS65AW, TTEXS80AW.

TMEXA



Intrinsically safe multisensor detector.

EMBCEXA



Base for intrinsically safe detector.



APPROVAL

► MED





MANUAL CALL POINTS

DMA



Indoor manual call point IP24D.

DME



Waterproof manual call point IP67.

DMEXEA



Intrinsically safe manual call point IP67.

DMD



Indoor manual call point IP33.

DMED



Waterproof manual call point IP66

SIRENS AND BEACONS

SDIR24_1CDE



Multi-tone red siren, 24VDC, 100dB, IP65, MED.

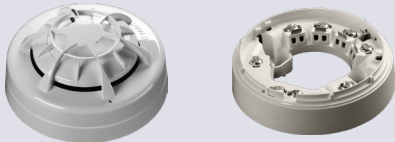
FSDIR24_10CDE



Multi-tone red sounder/beacon 24 VDC , 1J, 100dB, IP65, MED.

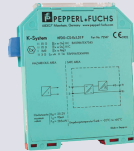
OTHER

DIAR01



Multisensor detector with relay base.

IGEXCONV



Galvanic isolator for intrinsically safe detector (to be combined with TOEXA, TTEXA, DMEXEA).

IAA



Remote indicator not waterproof.

DI TEMPO



Conventional loop detector timer delay.



Tel. + 33 (0)2 98 52 16 44 - Fax : + 33 (0)2 98 64 74 05 - marinelec@marinelec.com - www.marinelec.com

sail safely

